



Welcome to this years Festival Of The Arts. As we understand, Margret Carlson started this festival in 2009, which makes this the 10th year running. We are so happy to have taken on this event. As always we welcome local, regional and national artist. Our only basic requirement is that the goods shown should be handcrafted. Everything else is a go, lets see your creativity!

This years time schedule; 10am to Dusk. As an artist or crafter showing there wares, you are welcome to stay the entire time but if you would like to turn in early or join in the other festivities you are welcome to shut down as early as 4pm. We only ask that not pack out until the festival is closed.

Caleo Coffee will be serving Coffee and other tasty treats.

Jim Weber and Patt Taylor, festival Favorites will there too.

We will be announcing the other food music and other activities soon.

Our organizational meeting will be held on May 5th at 1pm and should last about an hour. This meeting is for any one registered or wanting to register to show and sell at our 2019 Festival of The Arts at The Old Mill Village.

I will also be compiling a list of all the Fire work display we can see from the old mill. Last year we could see 7 different displays

TTFN....



B - BARN
ARTIST

WM WATER MILL
RESTROOMS
FOOD / COFFEE
ARTIST

CY - COURT YARD
MUSIC
FOOD
ARTIST

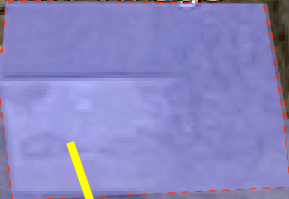


MP - MILL PORCH
ARTIST

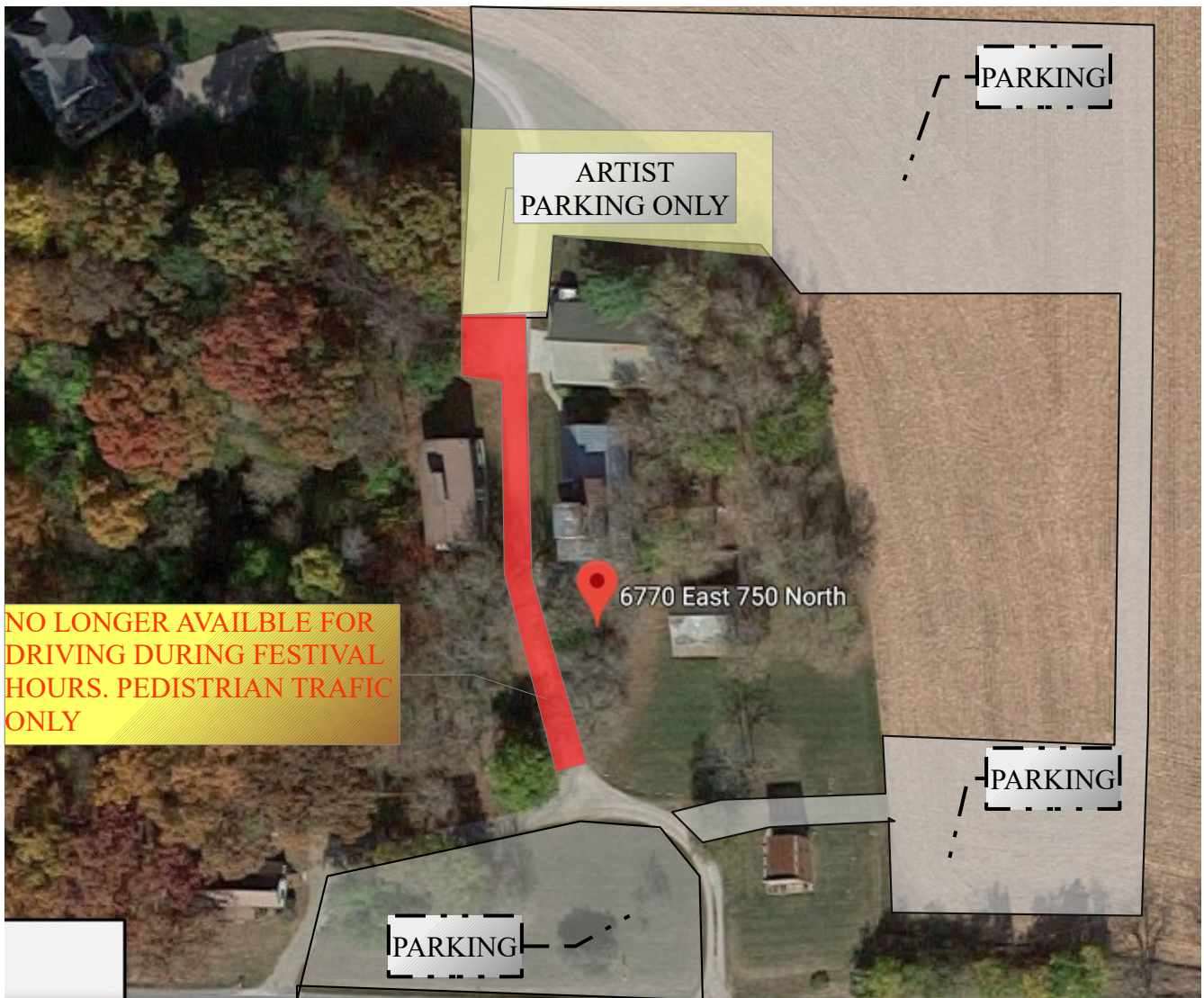
CL - CHAPLE LAWN
ARTIST

The Old Mill Village

G - GRASS
ARTIST



PB - BRIDAL PARLOR
ARTIST



This year, as this wonderful place evolves, there have been a lot of changes and updates to our wonderful lil village. The one thing that will not change is our desire to give everyone a fun place to show off your arts and crafts.

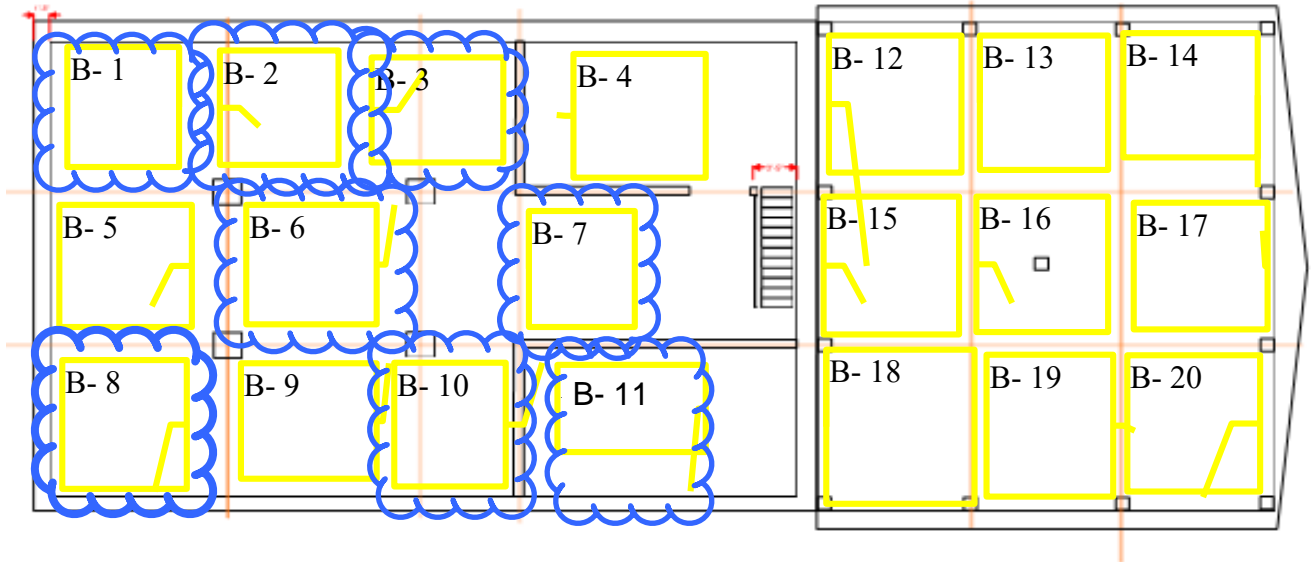
You will see on the map more places to set up, 70 SPOTS NOW AVAILABLE and different parking.

And this year there will be NO driving on the main drive through the Buildings during show open hours. This drive will be available to load in and load out.

This year we will be bringing in different food and more music.

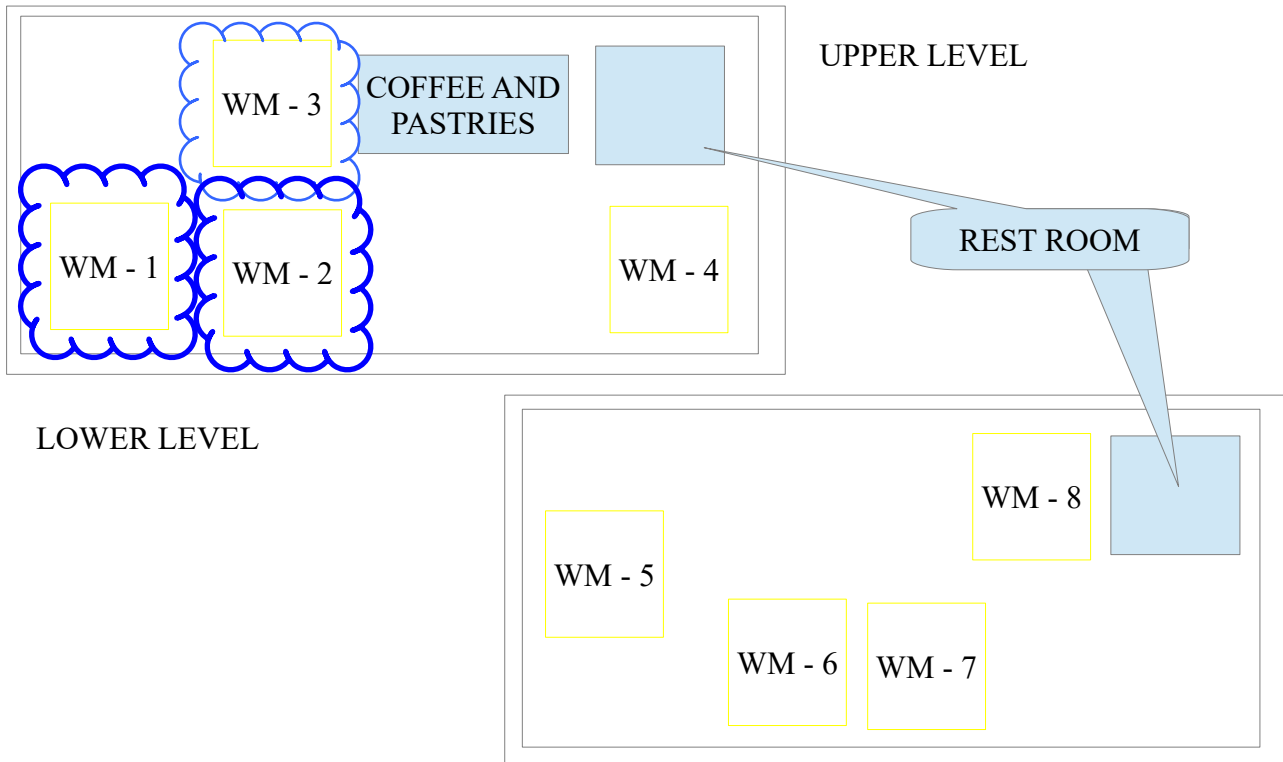
We will also break down each building a little more detailed. Feel free to peruse and chose you spot for the show. Cant wait to see you all this year!

B – BARN SPACES AVAILABLE.



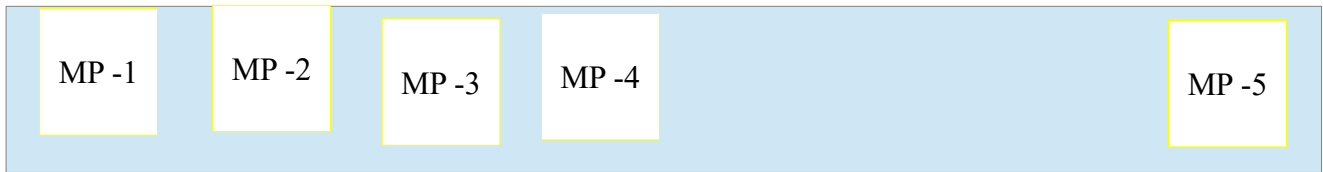
SPACE#	NAME	ART OR CRAFT
B-1	<i>The Vintage Daisy</i>	<i>Jewelry and repurposed small antique items</i>
B-2	<i>Deb Prince</i>	<i>Acrylic paintings and paper bead jewelry</i>
B-3	<i>Mildred Flower</i>	<i>Woodcraft</i>
B-4		
B-5		
B-6	<i>The Warped Sisters (Bonnie Nast)</i>	<i>Hand Made Rugs and Yarn</i>
B-7	<i>Eva Van Wagner</i>	<i>Miscellaneous Crafts</i>
B-8	<i>Cheryl Buchhop</i>	<i>Towels ,wine bottle lights, misc. Items</i>
B-9		
B-10	<i>Donna Allan</i>	<i>Jewelry</i>
B-11	<i>Ann Gullberg</i>	<i>Lamp work glass and enamels</i>
B-12		
B-13		
B-14		
B-15		
B-16		
B-17		
B-18		
B-20		

WM – WATER MILL SPACES AVAILABLE.



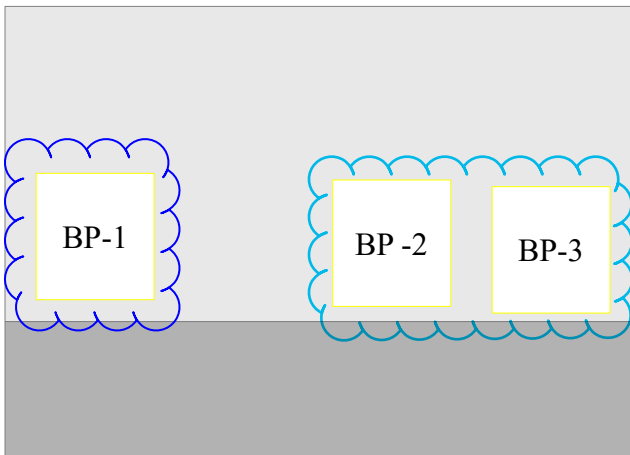
SPACE#	NAME	ART OR CRAFT
WM-1	<i>The Old Mill Village</i>	<i>Wedding and events</i>
WM-2	<i>Guardian Village Ministries</i>	<i>Hand Made Jewelry</i>
WM-3	<i>Esters Pastries</i>	<i>Amish backed goods</i>
WM-4		
WM-5		
WM-6		
WM-7		
WM-8		
WM-9		
WM-10		
	RESTROOM	UPPER LEVEL
	RESTROOM	LOWER LEVEL
	ESTERS PASTRIES	UPPER LEVEL
	CALEOS COFFEE	UPPER LEVEL

MP – MILL PORCH PACES AVAILABLE.



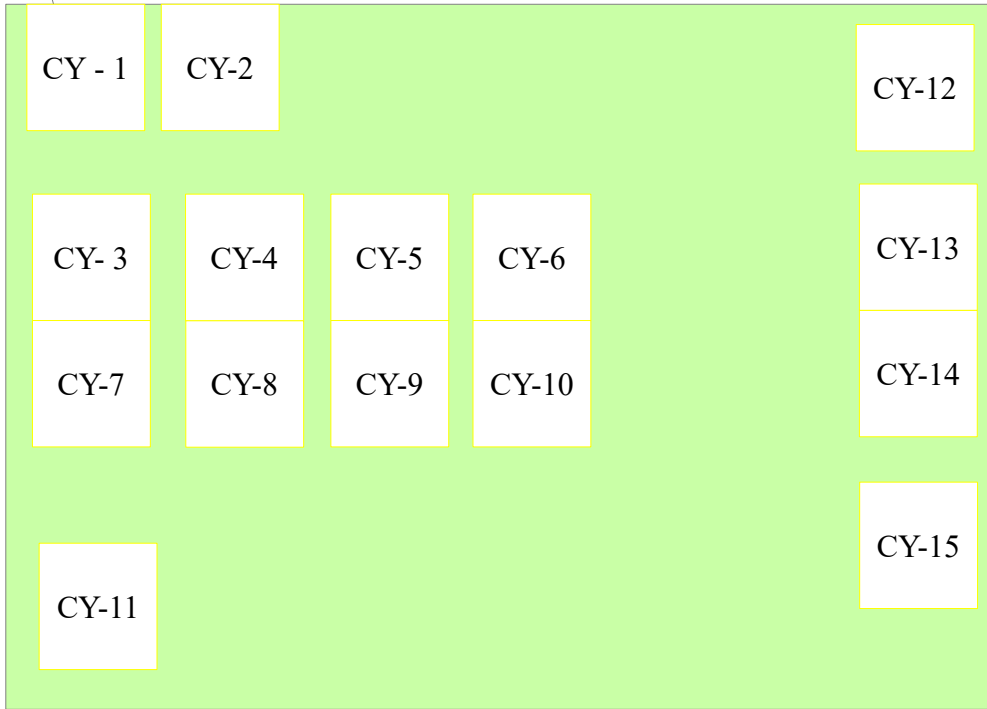
SPACE#	NAME	ART OR CRAFT
MP-1		
MP-2		
MP-3		
MP-4		
MP-5		

BP BRIDAL PARLOR SPACES AVAILABLE.



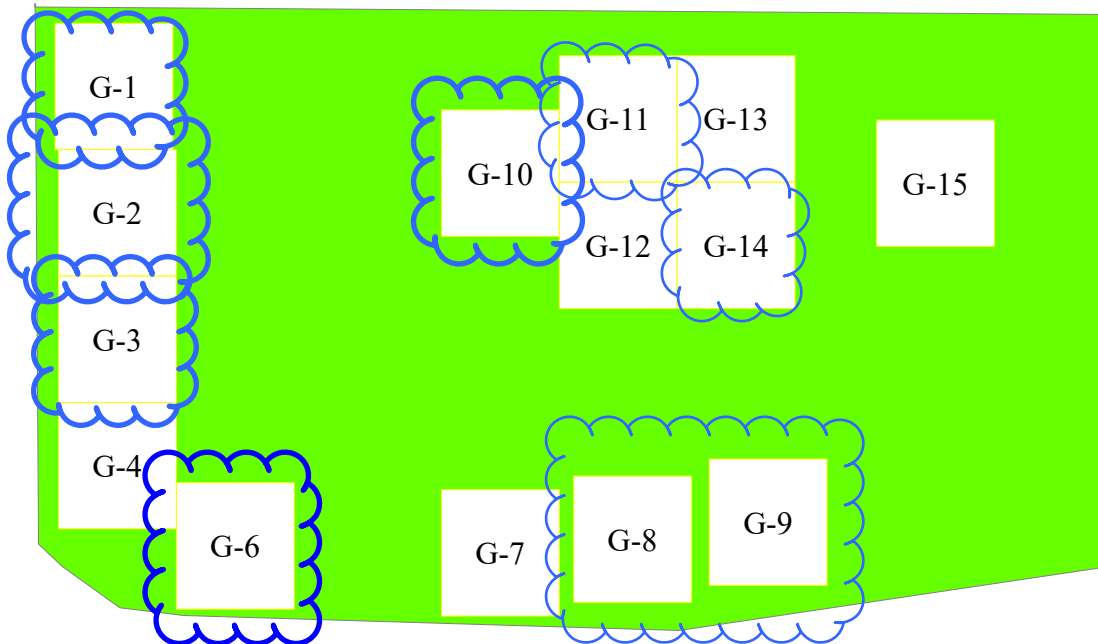
SPACE#	NAME	ART OR CRAFT
MP-1	<i>Courtney Hantz</i>	<i>Handmade Tumblers/signs/crafts</i>
MP-2	<i>Sue Greisinger</i>	<i>glass and other</i>
MP-3	<i>Sue Greisinger</i>	<i>glass and other</i>

COURT YARD SPACES AVAILABLE.



SPACE#	NAME	ART OR CRAFT
CY-1		
CY-2		
CY-3		
CY-4		
CY-5		
CY-6		
CY-7		
CY-8		
CY-9		
CY-10		
CY-11		
CY-12		
CY-13		
CY-14		
CY-15		

G - GRASS AREA AVAILABLE



SPACE#	NAME	ART OR CRAFT
G-1	<i>Lisa K Selph</i>	<i>Yarn goods, some baked goods, stone jewelry</i>
G-2	<i>Kalyn J. Ellis-Ritchie</i>	<i>Blue Moon Mosaics Mosaic art</i>
G-3	Patti Anderson	Hand crafted paper bead jewelry
G-4		
G-5		
G-6	<i>Micheal J Weber</i>	<i>Water Color Painting</i>
G-7		
G-8	<i>Larry Nern</i>	<i>Paintings</i>
G-9	<i>Larry Nern</i>	<i>Paintings</i>
G-10	<i>Steve Smith 4 Corners Gallery</i>	<i>Pottery</i>
G-11	<i>River Stone Rose</i>	<i>Floral designs</i>
G-12		
G-13		
G-14	<i>Country Road Treasures</i>	<i>Homemade decor, glasses, bibs, and decals</i>
G-15		

ML MILL LAWN SPACES AVAILABLE.



SPACE#	NAME	ART OR CRAFT
MP-1	<i>Deb Prince</i>	<i>Paintings and paper bead jewelry</i>
MP-2		
MP-3		
MP-4		
MP-5		

MUSIC	NAME	ART OR CRAFT (MUSIC TYPE)
	<i>JIM WEBER</i>	<i>FOLK , POP, COVERS AND ORIGINALS</i>
	<i>PATT TAYLOR</i>	<i>OLDIES , CLASSICS , ORIGINALS AND OBSCURE REQUESTS</i>

FOOD	NAME	ART OR CRAFT (FOOD TYPE)
	<i>Caleo Cafe</i>	<i>COFFE AND OTHER TREATS</i>